



ENGINEERED FOR SUPERIOR PERFORMANCE

Stainless Steel Connection System

2026





AQUApipe specializes in solutions for compressed air and fluids distribution. Through out the last 10 years, we have continued to invest in R&D, by taking into account market feedback and real-world conditions, our technology has gone through several stages of evolution. Today the new generation of products are engineered to be the most superior products available.



More than 31,000m² layout, 100% ownership of manufacturing plants, R&D center, office, logistic center. We're committed to your total solution provider for products, system design, engineering proposal and installations.

Our products are utilized globally for all compressed air, inert gas, and fluid applications.





ENGINEERED FOR SUPERIOR PERFORMANCE

AQUApipeline is focusing on fluids supply system solution, it belongs to AIRpipe. By utilizing synergy of piping connection technology from AIRpipe, AQUApipeline brings superior performance of thin wall stainless steel pipe system.

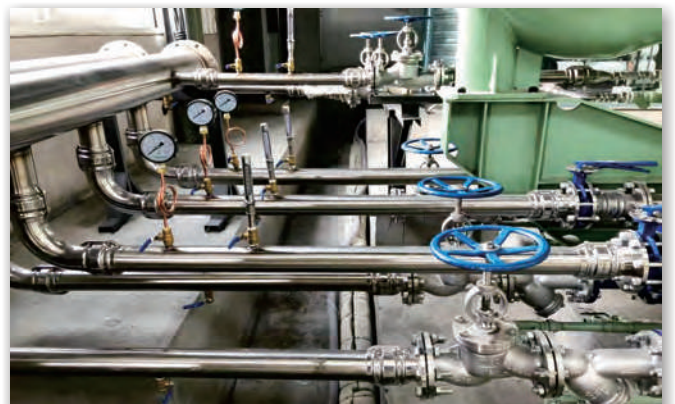
By using this unique patented technology, AQUApipeline not only inherits all good benefits from stainless steel, but also help you to reduce the installation and material costs to a minimum level.

Now it's time to say goodbye to your welding or threading toolset!

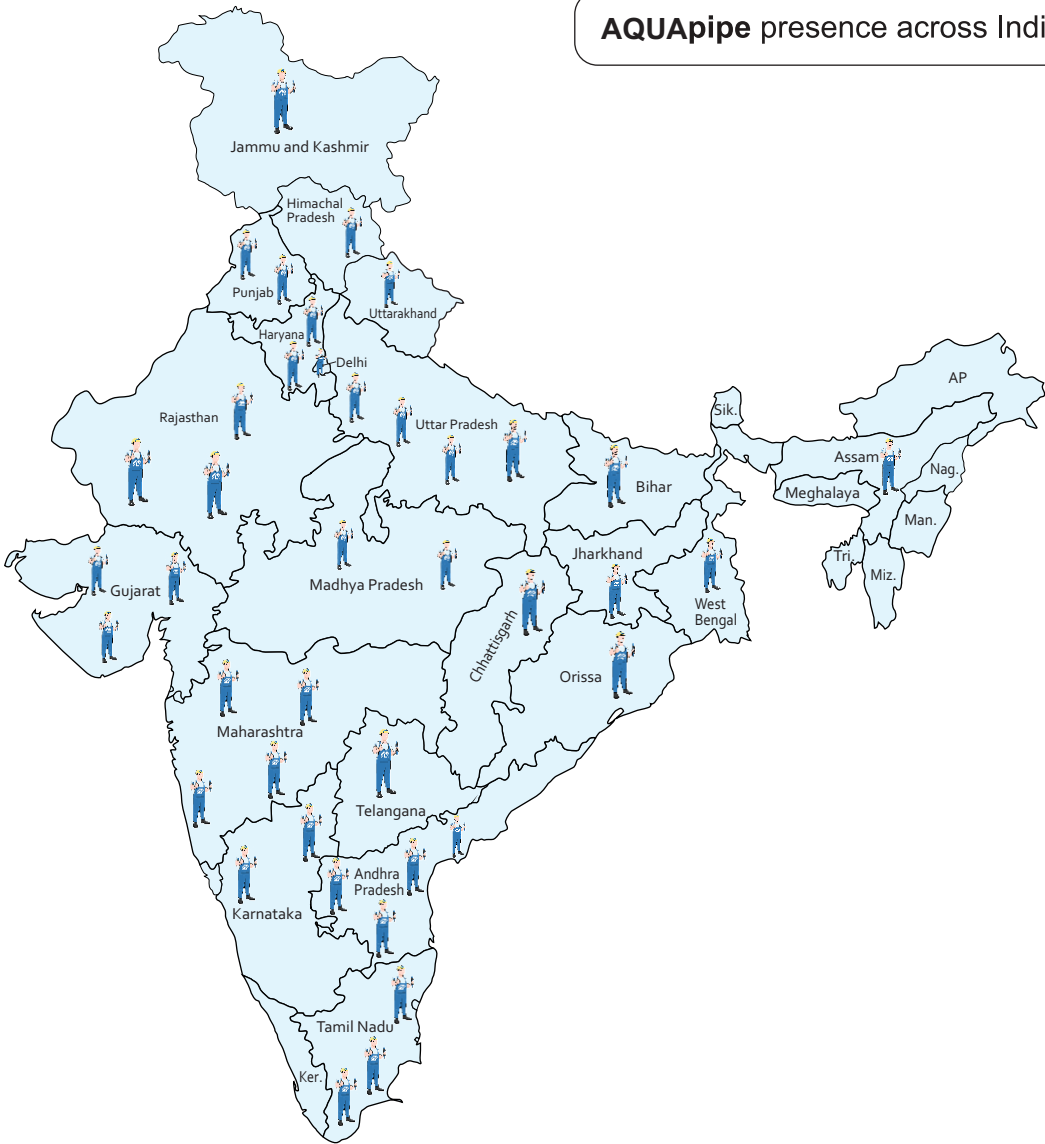


* AQUApipeline is a product brand in AIRpipe Group.

GOODBYE...



AQUApipe presence across India



North	West	South	East	Project
Email: north@airpipe.in M: +91-9599441637	Email: west@airpipe.in M: +91-9599441097	Email: south1@airpipe.in M: +91-9599600762	Email: east@airpipe.in M: +91-9599441523	Email: projects@airpipe.in M: +91-9650395007
Email: north2@airpipe.in M: +91-9599290943	Email: gujarat@airpipe.in M: +91-9599494422	Email: chennai@airpipe.in M: +91-8448175369	Email: east1@airpipe.in M: +91-9870291492	Email: projects1@airpipe.in M: +91-9266984600
Email: north3@airpipe.in M: +91-9599775242	Email: west1@airpipe.in M: +91-8448289450	Email: south2@airpipe.in M: +91-9818970106	Email: jharkhand@airpipe.in M: +91-7428305454	<div style="background-color: #ADD8E6; padding: 5px;">Customer Support</div> Email: ccs@airpipe.in M: +91-7303640036
Email: lucknow@airpipe.in M: +91-9599693311		Email: bangalore@airpipe.in M: +91-8448175391	<div style="background-color: #ADD8E6; padding: 5px;">Marketing</div> Email: marketing@airpipe.in M: +91-8448392019	<div style="background-color: #ADD8E6; padding: 5px;">Supply Chain</div> Email: sc@airpipe.in M: +91-9599290941
Email: punjab@airpipe.in M: +91-9599441620		Email: hyderabad@airpipe.in M: +91-9870210041	<div style="background-color: #ADD8E6; padding: 5px;">Design</div> Email: design@airpipe.in M: +91-9958040619	Email: warehouse@airpipe.in M: +91-9599597955
Email: rajasthan@airpipe.in M: +91-9871178502				Email: warehouse1@airpipe.in M: +91-9289139644
Email: jaipur@airpipe.in M: +91- 9871178503				



DN15-100 ▶

- Built-in sealing, options for gas and liquid.
- Extension fitting sleeve grabbing on pipe.
- Quick & modular installation, reduce labor cost.
- Superior reliability & longevity.



◀ DN125-250

- Clampshell union connector, quick install & re-assembly.
- Convex ring, no shrinking on inner diameter.
- Surface contact, active concentric sealing, leak free.
- Superior reliability & longevity.



Disadvantage of PPR Pipe



- Aging on UV, not suitable for outdoor installation.
- Bacteria/moss grow on light, pollution into fluids.
- Heat expansion 8 times of SS, strength 1/8 of SS, risk of broken in low temperature.
- Leakage/loosening due to plastic hot melting connection, short lifetime.
- Inner size reduction due to hot melting, flow restriction.

Disadvantage of Carbon Steel Pipe



- Oxidization, rusting will be accelerated after 4-5 years, both inner and outside.
- High flow friction inner surface and pollution into fluids.
- High Leakage & broken risk especially for outdoor and underground installation.
- Thick & heavy pipe, high labor cost due to welding/ threading/ flanging,

AQUApipes Features & Benefits



- International standards 304/316 stainless steel.
- Premium quality for water, air/ gas and other compatible fluids.
- Widely used in industries like food & beverage, medical & chemical productions, pharmacy etc.



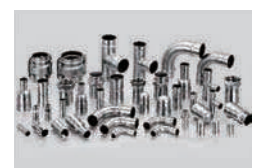
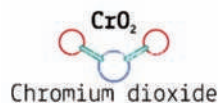
- Wide temperature range by working with proper sealing.
- Moderate expansion characteristics & high tensile strength.
- No risk of breaking due to water freezing.



- 10 years warranty for all AQUApipes & fittings.
- Stability for all weather conditions.
- "Soft" connection can absorb 2-3mm expansion/ contraction.



- Corrosion resistance due to chromium dioxide layer.
- Smooth inner surface ensure best flow characteristics.
- No risk on pollution into fluids.



AQUApipe vs PPR Pipe



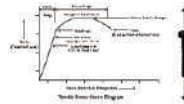
	Items	AQUApipe (304)	PPR pipe	Remark
Corrosion Resistance	Tensile strength(N/mm ²)	≥520	≥49	PPR's strength only 9.2% of AQUApipe
	Wear resistance	High	Low	PPR much lower resistance to flow impact
	UV impact	No impact	Aging	Plastic will be aging quickly due to constant UV light
	Expansion factor(10 ⁻⁶ m/°C) (0-100°C)	16	70	Expansion is 8 times of AQUApipe, risk of leaking/ breaking due to temperature change
	Lowest temperature	-40°C, sealing -270°C	-5°C	PPR will be crispy below zero
	Highest temperature	120°C, sealing 400°C	90°C	Risk of toxic materials being separated out when PPR above 90°C
	Environmental endocrine	No	Possible	Disturb endocrine system
Environmental Protection	Contamination precipitation	Very less	Easy to happen	Easy to be polluted due to sunshine and contamination
	Risk of toxic water	No	Possible	If plastic material doesn't comply relevant standard
	Toxic materials	No	Possible	Possible into fluids
	Odours	No	Possible	Possible into fluids
	Recycle	Recycle	Non-degradation	Can not be 100% recycled
	Lifetime	≥100 years	5-20 years	Only ¼ lifetime of AQUApipe

Physical performance of different pipes



Pipe materials	Density (kg/m ³)	Expansion factor (10 ⁻⁶ m/°C)	Thermal conductivity (W/m/°C)	Specific heat conductivity (J/KG/°C)	Resistivity (Ωkmm ² /m)	Young's modulus (KN/mm ²)	Magnetism
AQUApipes	7930	16	15	500	0.72	200	No
Carbon steel pipe	7850	11.6	60	60	0.14	210	Yes
Plastic pipe	UPVC	1350	70	0.05	1470	C.10-18	/
	PE, PEX, PB	950	140				
	PP-R	900	110				

Tensile strength of metal pipes



Pipe type	Material	Tensile strength (MPa)	Elongation (%)
AQUApipes	304	520~750	> 35
	304L	480~670	
	316	520~680	
	316L	480~620	
Carbon steel	Carbon steel	230~290	> 30
Copper	Copper	210~380	/

Flow rate comparison



Pipe materials (L/min)	Nominal Diameter					
	15mm	20mm	25mm	32mm	50mm	65mm
	½	¾	1	1¼	2	2½
AQUApipes	7	16	34	53	174	297
Copper pipe	6	15	30	51	160	265
Galvanized pipe	6	13	25	49	138	265
Aluminum plastic pipe	5	11	24	50	153	/

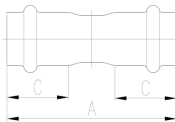
PRODUCT TECHNICAL PARAMETERS

STAINLESS STEEL PIPE



SS304	Description of Products
51200000103	STAINLESS STEEL PIPE DN15(ODφ16mm,THICKNESS 0.8mm)5.8m
51200010103	STAINLESS STEEL PIPE DN20(ODφ20mm,THICKNESS 1.0mm)5.8m
51200020103	STAINLESS STEEL PIPE DN25(ODφ25.4mm,THICKNESS 1.0mm)5.8m
51200030103	STAINLESS STEEL PIPE DN32(ODφ32mm,THICKNESS 1.2mm)5.8m
51200040103	STAINLESS STEEL PIPE DN40(ODφ40mm,THICKNESS 1.2mm)5.8m
51200050103	STAINLESS STEEL PIPE DN50(ODφ50.8mm,THICKNESS 1.2mm)5.8m
51200060103	STAINLESS STEEL PIPE DN60(ODφ63.5mm,THICKNESS 1.2mm)5.8m
51200140103	STAINLESS STEEL PIPE DN65(ODφ76.1mm,THICKNESS 1.5mm)5.8m
51200070103	STAINLESS STEEL PIPE DN80(ODφ88.9mm,THICKNESS 1.5mm)5.8m
51200080003	STAINLESS STEEL PIPE DN100(ODφ101.6mm,THICKNESS 1.5mm)5.8m
51200090003	STAINLESS STEEL PIPE DN125(ODφ133mm,THICKNESS 2.0mm)5.8m
51200100003	STAINLESS STEEL PIPE DN150(ODφ159mm,THICKNESS 2.0mm)5.8m
51200110003	STAINLESS STEEL PIPE DN200(ODφ219mm,THICKNESS 2.5mm)5.8m
51200120003	STAINLESS STEEL PIPE DN250(ODφ273mm,THICKNESS 3.0mm)5.8m

PIPE TO PIPE JOINT



EPDM	EPDM (NSF)	NBR	FKM	Description of Products	A	B
51202000001	51202000002	51202000003	51202000004	PIPE TO PIPE JOINT, DN15, PRESS	58	21
51202010001	51202010002	51202010003	51202010004	PIPE TO PIPE JOINT, DN20, PRESS	63	24
51202020001	51202020002	51202020003	51202020004	PIPE TO PIPE JOINT, DN25, PRESS	76	28
51202030001	51202030002	51202030003	51202030004	PIPE TO PIPE JOINT, DN32, PRESS	91	35
51202040001	51202040002	51202040003	51202040004	PIPE TO PIPE JOINT, DN40, PRESS	112	42.5
51202050001	51202050002	51202050003	51202050004	PIPE TO PIPE JOINT, DN50, PRESS	125	48.5
51202060001	51202060002	51202060003	51202060004	PIPE TO PIPE JOINT, DN60, PRESS	151	58
51202140001	51202140002	51202140003	51202140004	PIPE TO PIPE JOINT, DN65, PRESS	161	60
51202070001	51202070002	51202070003	51202070004	PIPE TO PIPE JOINT, DN80, PRESS	169	70
51202080001	51202080002	51202080003	51202080004	PIPE TO PIPE JOINT, DN100, PRESS	192	82

Remarks: NSF Certified Pipe and Fitting in DN20-DN80



EPDM SS304	NBR	FKM	Description of Products
50102090106	50102090105	50102090107	PIPE TO PIPE JOINT, DN125, CLAMP
50102100106	50102100105	50102100107	PIPE TO PIPE JOINT, DN150, CLAMP
50102110106	50102110105	50102110107	PIPE TO PIPE JOINT, DN200, CLAMP
50102120103	50102120102	50102120104	PIPE TO PIPE JOINT(STEEL), DN250, CLAMP

SLIDE PIPE TO PIPE JOINT



EPDM SS304	EPDM (NSF)	NBR	FKM	Description of Products	A
51202009901	51202009902	51202009903	51202009904	SLIDE PIPE TO PIPE JOINT, DN15, PRESS	116
51202019901	51202019902	51202019903	51202019904	SLIDE PIPE TO PIPE JOINT, DN20, PRESS	131
51202029901	51202029902	51202029903	51202029904	SLIDE PIPE TO PIPE JOINT, DN25, PRESS	129
51202039901	51202039902	51202039903	51202039904	SLIDE PIPE TO PIPE JOINT, DN32, PRESS	100
51202049901	51202049902	51202049903	51202049904	SLIDE PIPE TO PIPE JOINT, DN40, PRESS	116
51202059901	51202059902	51202059903	51202059904	SLIDE PIPE TO PIPE JOINT, DN50, PRESS	126
51202069901	51202069902	51202069903	51202069904	SLIDE PIPE TO PIPE JOINT, DN60, PRESS	214
51202149901	51202149902	51202149903	51202149904	SLIDE PIPE TO PIPE JOINT, DN65, PRESS	232
51202079901	51202079902	51202079903	51202079904	SLIDE PIPE TO PIPE JOINT, DN80, PRESS	265
51202089901	51202089902	51202089903	51202089904	SLIDE PIPE TO PIPE JOINT, DN100, PRESS	300

Remarks: NSF Certified Pipe and Fitting in DN20-DN80

90° ELBOW

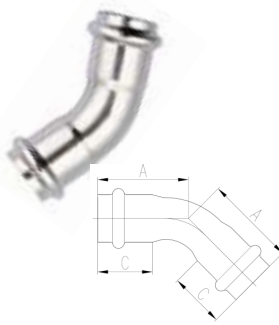


EPDM SS304	EPDM (NSF)	NBR	FKM	Description of Products	A	C
5120300001	5120300002	5120300003	5120300004	90°ELBOW, DN15, PRESS	47.5	21
51203010001	51203010002	51203010003	51203010004	90°ELBOW, DN20, PRESS	58	24
51203020001	51203020002	51203020003	51203020004	90°ELBOW, DN25, PRESS	71.5	28
51203030001	51203030002	51203030003	51203030004	90°ELBOW, DN32, PRESS	84	35
51203040001	51203040002	51203040003	51203040004	90°ELBOW, DN40, PRESS	107	42.5
51203050001	51203050002	51203050003	51203050004	90°ELBOW, DN50, PRESS	129.5	48.5
51203060001	51203060002	51203060003	51203060004	90°ELBOW, DN60, PRESS	165	58
51203140001	51203140002	51203140003	51203140004	90°ELBOW, DN65, PRESS	185	60
51203070001	51203070002	51203070003	51203070004	90°ELBOW, DN80, PRESS	215	70
51203080001	51203080002	51203080003	51203080004	90°ELBOW, DN100, PRESS	245	82

Remarks: NSF Certified Pipe and Fitting in DN20-DN80

EPDM SS304	Description of Products
50103090003	90° Elbow DN125 Clamp
50103100003	90° Elbow DN150 Clamp
50103110003	90° Elbow DN200 Clamp
50103120003	90° Elbow DN250 Clamp

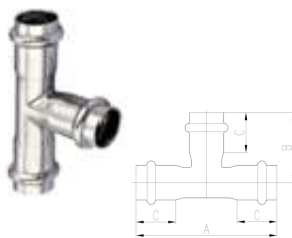
45° ELBOW



EPDM SS304	EPDM (NSF)	NBR	FKM	Description of Products	A	C
51204000001	51204000002	51204000003	51204000004	45°ELBOW, DN15, PRESS	35	21
51204010001	51204010002	51204010003	51204010004	45°ELBOW, DN20, PRESS	40	24
51204020001	51204020002	51204020003	51204020004	45°ELBOW, DN25, PRESS	47.5	28
51204030001	51204030002	51204030003	51204030004	45°ELBOW, DN32, PRESS	58.5	35
51204040001	51204040002	51204040003	51204040004	45°ELBOW, DN40, PRESS	72	42.5
51204050001	51204050002	51204050003	51204050004	45°ELBOW, DN50, PRESS	85.5	48.5
51204060001	51204060002	51204060003	51204060004	45°ELBOW, DN60, PRESS	109	58
51204140001	51204140002	51204140003	51204140004	45°ELBOW, DN65, PRESS	118	60
51204070001	51204070002	51204070003	51204070004	45°ELBOW, DN80, PRESS	136.5	70
51204080001	51204080002	51204080003	51204080004	45°ELBOW, DN100, PRESS	156	82

EPDM SS304	Description of Products
50104090003	45° Elbow DN125 Clamp
50104100003	45° Elbow DN150 Clamp
50104110003	45° Elbow DN200 Clamp
50104120003	45° Elbow DN250 Clamp

EQUAL TEE

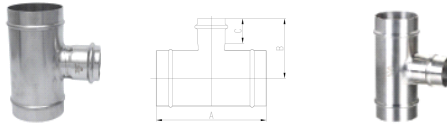


EPDM SS304	EPDM (NSF)	NBR	FKM	Description of Products	A	B	C
51205000001	51205000002	51205000003	51205000004	EQUAL TEE, DN15, PRESS	75	37	21
51205010001	51205010002	51205010003	51205010004	EQUAL TEE, DN20, PRESS	90	43	24
51205020001	51205020002	51205020003	51205020004	EQUAL TEE, DN25, PRESS	108	51.5	28
51205030001	51205030002	51205030003	51205030004	EQUAL TEE, DN32, PRESS	130	64	35
51205040001	51205040002	51205040003	51205040004	EQUAL TEE, DN40, PRESS	164	78	42.5
51205050001	51205050002	51205050003	51205050004	EQUAL TEE, DN50, PRESS	187	89.5	48.5
51205060001	51205060002	51205060003	51205060004	EQUAL TEE, DN60, PRESS	220	109	58
51205140001	51205140002	51205140003	51205140004	EQUAL TEE, DN65, PRESS	237	118	60
51205070001	51205070002	51205070003	51205070004	EQUAL TEE, DN80, PRESS	264	130	70
51205080001	51205080002	51205080003	51205080004	EQUAL TEE, DN100, PRESS	302	149	82

Remarks: NSF Certified Pipe and Fitting in DN20-DN80

EPDM SS304	Description of Products
50105090003	EQUAL TEE, DN125, CLAMP
50105100003	EQUAL TEE, DN150, CLAMP
50105110003	EQUAL TEE, DN200, CLAMP
50105120003	EQUAL TEE, DN250, CLAMP

REDUCING TEE



EPDM SS304	EPDM (NSF)	NBR	FKM	Description of Products	A	B	C	C1
51207010001	51207010002	51207010003	51207010004	REDUCING TEE, DN20-DN15, PRESS	90	47.5	24	21
51207020001	51207020002	51207020003	51207020004	REDUCING TEE, DN25-DN15, PRESS	108	50	28	21
51207020101	51207020102	51207020103	51207020104	REDUCING TEE, DN25-DN20, PRESS	108	58	28	24
51207030001	51207030002	51207030003	51207030004	REDUCING TEE, DN32-DN15, PRESS	130	53.5	35	21
51207030101	51207030102	51207030103	51207030104	REDUCING TEE, DN32-DN20, PRESS	130	61	35	24
51207030201	51207030202	51207030203	51207030204	REDUCING TEE, DN32-DN25, PRESS	130	55	35	28
51207040001	51207040002	51207040003	51207040004	REDUCING TEE, DN40-DN15, PRESS	164	57.5	42.5	21
51207040101	51207040102	51207040103	51207040104	REDUCING TEE, DN40-DN20, PRESS	164	65	42.5	24
51207040201	51207040202	51207040203	51207040204	REDUCING TEE, DN40-DN25, PRESS	164	58	42.5	28
51207040301	51207040302	51207040303	51207040304	REDUCING TEE, DN40-DN32, PRESS	164	65	42.5	35
51207050001	51207050002	51207050003	51207050004	REDUCING TEE, DN50-DN15, PRESS	187	64	48.5	21
51207050101	51207050102	51207050103	51207050104	REDUCING TEE, DN50-DN20, PRESS	187	71	48.5	24
51207050201	51207050202	51207050203	51207050204	REDUCING TEE, DN50-DN25, PRESS	187	64	48.5	28
51207050301	51207050302	51207050303	51207050304	REDUCING TEE, DN50-DN32, PRESS	187	72	48.5	35
51207050401	51207050402	51207050403	51207050404	REDUCING TEE, DN50-DN40, PRESS	187	82	48.5	42.5
51207060001	51207060002	51207060003	51207060004	REDUCING TEE, DN60-DN15, PRESS	220	70	58	21
51207060101	51207060102	51207060103	51207060104	REDUCING TEE, DN60-DN20, PRESS	220	76	58	24
51207060201	51207060202	51207060203	51207060204	REDUCING TEE, DN60-DN25, PRESS	220	71	58	28
51207060301	51207060302	51207060303	51207060304	REDUCING TEE, DN60-DN32, PRESS	220	78	58	35
51207060401	51207060402	51207060403	51207060404	REDUCING TEE, DN60-DN40, PRESS	220	90	58	42.5
51207060501	51207060502	51207060503	51207060504	REDUCING TEE, DN60-DN50, PRESS	220	95	58	48.5
51207140001	51207140002	51207140003	51207140004	REDUCING TEE, DN65-DN15, PRESS	237	77	60	21
51207140101	51207140102	51207140103	51207140104	REDUCING TEE, DN65-DN20, PRESS	237	83	60	24
51207140201	51207140202	51207140203	51207140204	REDUCING TEE, DN65-DN25, PRESS	237	77	60	28
51207140301	51207140302	51207140303	51207140304	REDUCING TEE, DN65-DN32, PRESS	237	85	60	35
51207140401	51207140402	51207140403	51207140404	REDUCING TEE, DN65-DN40, PRESS	237	95	60	42.8
51207140501	51207140502	51207140503	51207140504	REDUCING TEE, DN65-DN50, PRESS	237	102	60	48.5
51207140601	51207140602	51207140603	51207140604	REDUCING TEE, DN65-DN60, PRESS	237	115	60	58
51207070101	51207070102	51207070103	51207070104	REDUCING TEE, DN80-DN20, PRESS	264	89	70	24
51207070201	51207070202	51207070203	51207070204	REDUCING TEE, DN80-DN25, PRESS	264	83.5	70	28
51207070301	51207070302	51207070303	51207070304	REDUCING TEE, DN80-DN32, PRESS	264	91	70	35
51207070401	51207070402	51207070403	51207070404	REDUCING TEE, DN80-DN40, PRESS	264	101.5	70	42.5
51207070501	51207070502	51207070503	51207070504	REDUCING TEE, DN80-DN50, PRESS	264	108	70	48.5
51207070601	51207070602	51207070603	51207070604	REDUCING TEE, DN80-DN60, PRESS	264	121	70	58
51207071401	51207071402	51207071403	51207071404	REDUCING TEE, DN80-DN65, PRESS	264	123.5	70	60
51207080101	51207080102	51207080103	51207080104	REDUCING TEE, DN100-DN20, PRESS	302	95	82	24
51207080201	51207080202	51207080203	51207080204	REDUCING TEE, DN100-DN25, PRESS	302	90	82	28
51207080301	51207080302	51207080303	51207080304	REDUCING TEE, DN100-DN32, PRESS	302	97	82	35
51207080401	51207080402	51207080403	51207080404	REDUCING TEE, DN100-DN40, PRESS	302	108	82	42.5
51207080501	51207080502	51207080503	51207080504	REDUCING TEE, DN100-DN50, PRESS	302	114	82	48.5
51207080601	51207080602	51207080603	51207080604	REDUCING TEE, DN100-DN60, PRESS	302	127	82	58
51207081401	51207081402	51207081403	51207081404	REDUCING TEE, DN100-DN65, PRESS	302	130	82	60
51207080701	51207080702	51207080703	51207080704	REDUCING TEE, DN100-DN80, PRESS	302	137	82	70
51207090601	51207090602	51207090603	51207090604	REDUCING TEE, DN125-DN60, CLAMP-PRESS	267.5	144.5		
51207091401	51207091402	51207091403	51207091404	REDUCING TEE, DN125-DN65, CLAMP-PRESS	280	147.5		
51207090701	51207090702	51207090703	51207090704	REDUCING TEE, DN125-DN80, CLAMP-PRESS	299	153.5		
51207090801	51207090802	51207090803	51207090804	REDUCING TEE, DN125-DN100, CLAMP-PRESS	313	161.5		
51207100601	51207100602	51207100603	51207100604	REDUCING TEE, DN150-DN60, CLAMP-PRESS	272.5	157		
51207101401	51207101402	51207101403	51207101404	REDUCING TEE, DN150-DN65, CLAMP-PRESS	285	159.5		
51207100701	51207100702	51207100703	51207100704	REDUCING TEE, DN150-DN80, CLAMP-PRESS	298	166.5		
51207100801	51207100802	51207100803	51207100804	REDUCING TEE, DN150-DN100, CLAMP-PRESS	310	174.5		
50107100903				REDUCING TEE, DN150-DN125, CLAMP-CLAMP				
51207110601	51207110602	51207110603	51207110604	REDUCING TEE, DN200-DN60, CLAMP-PRESS	265	187	58	
51207111401	51207111402	51207111403	51207111404	REDUCING TEE, DN200-DN65, CLAMP-PRESS	280	189.5	60	
51207110701	51207110702	51207110703	51207110704	REDUCING TEE, DN200-DN80, CLAMP-PRESS	295	196.5	70	
51207110801	51207110802	51207110803	51207110804	REDUCING TEE, DN200-DN100, CLAMP-PRESS	310	204.5	82	
50107110903				REDUCING TEE, DN200-DN125, CLAMP-CLAMP				
50107111003				REDUCING TEE, DN200-DN150, CLAMP-CLAMP				
51207120601	51207120602	51207120603	51207120604	REDUCING TEE, DN250-DN60, CLAMP-PRESS	239	214	58	
51207121401	51207121402	51207121403	51207121404	REDUCING TEE, DN250-DN65, CLAMP-PRESS	281.5	216.5	60	
51207120701	51207120702	51207120703	51207120704	REDUCING TEE, DN250-DN80, CLAMP-PRESS	294	223.5	70	
51207120801	51207120802	51207120803	51207120804	REDUCING TEE, DN250-DN100, CLAMP-PRESS	315	231.5	82	
50107120903				REDUCING TEE, DN250-DN125, CLAMP-CLAMP				
50107121003				REDUCING TEE, DN250-DN150, CLAMP-CLAMP				
50107121103				REDUCING TEE, DN250-DN200, CLAMP-CLAMP				

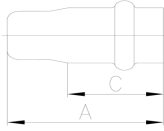
Remarks: NSF Certified Pipe and Fitting in DN20-DN80

REDUCING PIPE TO PIPE JOINT


EPDM SS304	EPDM (NSF)	NBR	FKM	Description of Products	A	C	C1
51221010001	51221010002	51221010003	51221010004	REDUCING PIPE TO PIPE JOINT, DN20-DN15, PRESS	68.5	24	21
51221020001	51221020002	51221020003	51221020004	REDUCING PIPE TO PIPE JOINT, DN25-DN15, PRESS	75	28	21
51221020101	51221020102	51221020103	51221020104	REDUCING PIPE TO PIPE JOINT, DN25-DN20, PRESS	79	28	24
51221030001	51221030002	51221030003	51221030004	REDUCING PIPE TO PIPE JOINT, DN32-DN15, PRESS	85	35	21
51221030101	51221030102	51221030103	51221030104	REDUCING PIPE TO PIPE JOINT, DN32-DN20, PRESS	95	35	24
51221030201	51221030202	51221030203	51221030204	REDUCING PIPE TO PIPE JOINT, DN32-DN25, PRESS	94	35	28
51221040001	51221040002	51221040003	51221040004	REDUCING PIPE TO PIPE JOINT, DN40-DN15, PRESS	109	42.5	21
51221040101	51221040102	51221040103	51221040104	REDUCING PIPE TO PIPE JOINT, DN40-DN20, PRESS	112	42.5	24
51221040201	51221040202	51221040203	51221040204	REDUCING PIPE TO PIPE JOINT, DN40-DN25, PRESS	116.5	42.5	28
51221040301	51221040302	51221040303	51221040304	REDUCING PIPE TO PIPE JOINT, DN40-DN32, PRESS	114	42.5	35
51221050001	51221050002	51221050003	51221050004	REDUCING PIPE TO PIPE JOINT, DN50-DN15, PRESS	113.5	48.5	21
51221050101	51221050102	51221050103	51221050104	REDUCING PIPE TO PIPE JOINT, DN50-DN20, PRESS	117	48.5	24
51221050201	51221050202	51221050203	51221050204	REDUCING PIPE TO PIPE JOINT, DN50-DN25, PRESS	123.5	48.5	28
51221050301	51221050302	51221050303	51221050304	REDUCING PIPE TO PIPE JOINT, DN50-DN32, PRESS	131	48.5	35
51221050401	51221050402	51221050403	51221050404	REDUCING PIPE TO PIPE JOINT, DN50-DN40, PRESS	135	48.5	42.5
51221060001	51221060002	51221060003	51221060004	REDUCING PIPE TO PIPE JOINT, DN60-DN15, PRESS	180	58	21
51221060101	51221060102	51221060103	51221060104	REDUCING PIPE TO PIPE JOINT, DN60-DN20, PRESS	182.5	58	24
51221060201	51221060202	51221060203	51221060204	REDUCING PIPE TO PIPE JOINT, DN60-DN25, PRESS	187	58	28
51221060301	51221060302	51221060303	51221060304	REDUCING PIPE TO PIPE JOINT, DN60-DN32, PRESS	195.5	58	35
51221060401	51221060402	51221060403	51221060404	REDUCING PIPE TO PIPE JOINT, DN60-DN40, PRESS	204.5	58	42.5
51221060501	51221060502	51221060503	51221060504	REDUCING PIPE TO PIPE JOINT, DN60-DN50, PRESS	210	58	48.5
51221140101	51221140102	51221140103	51221140104	REDUCING PIPE TO PIPE JOINT, DN65-DN20, PRESS	192.5	60	24
51221140201	51221140202	51221140203	51221140204	REDUCING PIPE TO PIPE JOINT, DN65-DN25, PRESS	200	60	28
51221140301	51221140302	51221140303	51221140304	REDUCING PIPE TO PIPE JOINT, DN65-DN32, PRESS	207.5	60	35
51221140401	51221140402	51221140403	51221140404	REDUCING PIPE TO PIPE JOINT, DN65-DN40, PRESS	218	60	42.5
51221140501	51221140502	51221140503	51221140504	REDUCING PIPE TO PIPE JOINT, DN65-DN50, PRESS	224.5	60	48.5
51221140601	51221140602	51221140603	51221140604	REDUCING PIPE TO PIPE JOINT, DN65-DN60, PRESS	238	60	58
51221070101	51221070102	51221070103	51221070104	REDUCING PIPE TO PIPE JOINT, DN80-DN20, PRESS	204.5	70	24
51221070201	51221070202	51221070203	51221070204	REDUCING PIPE TO PIPE JOINT, DN80-DN25, PRESS	211	70	28
51221070301	51221070302	51221070303	51221070304	REDUCING PIPE TO PIPE JOINT, DN80-DN32, PRESS	218.5	70	35
51221070401	51221070402	51221070403	51221070404	REDUCING PIPE TO PIPE JOINT, DN80-DN40, PRESS	229	70	42.5
51221070501	51221070502	51221070503	51221070504	REDUCING PIPE TO PIPE JOINT, DN80-DN50, PRESS	235.5	70	48.5
51221070601	51221070602	51221070603	51221070604	REDUCING PIPE TO PIPE JOINT, DN80-DN60, PRESS	249	70	58
51221071401	51221071402	51221071403	51221071404	REDUCING PIPE TO PIPE JOINT, DN80-DN65, PRESS	252	70	60
51221080201	51221080202	51221080203	51221080204	REDUCING PIPE TO PIPE JOINT, DN100-DN25, PRESS	234	82	28
51221080301	51221080302	51221080303	51221080304	REDUCING PIPE TO PIPE JOINT, DN100-DN32, PRESS	241.5	82	35
51221080401	51221080402	51221080403	51221080404	REDUCING PIPE TO PIPE JOINT, DN100-DN40, PRESS	252	82	42.5
51221080501	51221080502	51221080503	51221080504	REDUCING PIPE TO PIPE JOINT, DN100-DN50, PRESS	258.5	82	48.5
51221080601	51221080602	51221080603	51221080604	REDUCING PIPE TO PIPE JOINT, DN100-DN60, PRESS	272	82	58
51221081401	51221081402	51221081403	51221081404	REDUCING PIPE TO PIPE JOINT, DN100-DN65, PRESS	275	82	60
51221080701	51221080702	51221080703	51221080704	REDUCING PIPE TO PIPE JOINT, DN100-DN80, PRESS	281	82	70
51221090601	51221090602	51221090603	51221090604	REDUCING PIPE TO PIPE JOINT, DN125-DN60, CLAMP-PRESS			
51221091401	51221091402	51221091403	51221091404	REDUCING PIPE TO PIPE JOINT, DN125-DN65, CLAMP-PRESS			
51221090701	51221090702	51221090703	51221090704	REDUCING PIPE TO PIPE JOINT, DN125-DN80, CLAMP-PRESS			
51221090801	51221090802	51221090803	51221090804	REDUCING PIPE TO PIPE JOINT, DN125-DN100, CLAMP-PRESS			
51221100601	51221100602	51221100603	51221100604	REDUCING PIPE TO PIPE JOINT, DN150-DN60, CLAMP-PRESS			
51221101401	51221101402	51221101403	51221101404	REDUCING PIPE TO PIPE JOINT, DN150-DN65, CLAMP-PRESS			
51221100701	51221100702	51221100703	51221100704	REDUCING PIPE TO PIPE JOINT, DN150-DN80, CLAMP-PRESS			
51221100801	51221100802	51221100803	51221100804	REDUCING PIPE TO PIPE JOINT, DN150-DN100, CLAMP-PRESS			
50121100903				REDUCING PIPE TO PIPE JOINT, DN150-DN125, CLAMP-CLAMP			
51221110601	51221110602	51221110603	51221110604	REDUCING PIPE TO PIPE JOINT, DN200-DN60, CLAMP-PRESS			
51221111401	51221111402	51221111403	51221111404	REDUCING PIPE TO PIPE JOINT, DN200-DN65, CLAMP-PRESS			
51221110701	51221110702	51221110703	51221110704	REDUCING PIPE TO PIPE JOINT, DN200-DN80, CLAMP-PRESS			
51221110801	51221110802	51221110803	51221110804	REDUCING PIPE TO PIPE JOINT, DN200-DN100, CLAMP-PRESS			
50121111003				REDUCING PIPE TO PIPE JOINT, DN200-DN150, CLAMP-CLAMP			
51221120601	51221120602	51221120603	51221120604	REDUCING PIPE TO PIPE JOINT, DN250-DN60, CLAMP-PRESS			
51221121401	51221121402	51221121403	51221121404	REDUCING PIPE TO PIPE JOINT, DN250-DN65, CLAMP-PRESS			
51221120701	51221120702	51221120703	51221120704	REDUCING PIPE TO PIPE JOINT, DN250-DN80, CLAMP-PRESS			
51221120801	51221120802	51221120803	51221120804	REDUCING PIPE TO PIPE JOINT, DN250-DN100, CLAMP-PRESS			
50121121003				REDUCING PIPE TO PIPE JOINT, DN250-DN150, CLAMP-CLAMP			
50121121103				REDUCING PIPE TO PIPE JOINT, DN250-DN200, CLAMP-CLAMP			

Remarks: NSF Certified Pipe and Fitting in DN20-DN80

END CAP

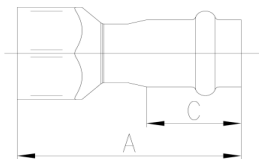


EPDM SS304	EPDM (NSF)	NBR	FKM	Description of Products	A	C
5120600001	5120600002	5120600003	5120600004	END CAP, DN15, PRESS	36	21
51206010001	51206010002	51206010003	51206010004	END CAP, DN20, PRESS	40	24
51206020001	51206020002	51206020003	51206020004	END CAP, DN25, PRESS	44	28
51206030001	51206030002	51206030003	51206030004	END CAP, DN32, PRESS	60	35
51206040001	51206040002	51206040003	51206040004	END CAP, DN40, PRESS	70	42.5
51206050001	51206050002	51206050003	51206050004	END CAP, DN50, PRESS	75	48.5
51206060001	51206060002	51206060003	51206060004	END CAP, DN60, PRESS	97	58
51206140001	51206140002	51206140003	51206140004	END CAP, DN65, PRESS	108	60
51206070001	51206070002	51206070003	51206070004	END CAP, DN80, PRESS	114	70
51206080001	51206080002	51206080003	51206080004	END CAP, DN100, PRESS	131	82

Remarks: NSF Certified Pipe and Fitting in DN20-DN80

EPDM SS304	Description of Products
50106090003	END CAP, DN125, CLAMP
50106100003	END CAP, DN150, CLAMP
50106110003	END CAP, DN200, CLAMP
50106120003	END CAP, DN250, CLAMP

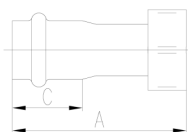
THREAD JOINT FEMALE (BSP)



EPDM SS304	EPDM (NSF)	NBR	FKM	Description of Products	A	C
51219000001	51219000002	51219000003	51219000004	THREAD JOINT,PRESS DN15-1/2 FEMALE	50	21
51219000101	51219000102	51219000103	51219000104	THREAD JOINT,PRESS DN15-3/4 FEMALE	51.5	21
51219010001	51219010002	51219010003	51219010004	THREAD JOINT,PRESS DN20-1/2 FEMALE	50.5	24
51219010101	51219010102	51219010103	51219010104	THREAD JOINT,PRESS DN20-3/4 FEMALE	54	24
51219010201	51219010202	51219010203	51219010204	THREAD JOINT,PRESS DN25-1 FEMALE	57	24
51219020001	51219020002	51219020003	51219020004	THREAD JOINT,PRESS DN25-1/2 FEMALE	63.5	28
51219020101	51219020102	51219020103	51219020104	THREAD JOINT,PRESS DN25-3/4 FEMALE	61.5	28
51219020201	51219020202	51219020203	51219020204	THREAD JOINT,PRESS DN25-1 FEMALE	65.5	28
51219020301	51219020302	51219020303	51219020304	THREAD JOINT,PRESS DN25-1 1/4 FEMALE	70	28
51219030201	51219030202	51219030203	51219030204	THREAD JOINT,PRESS DN32-1 FEMALE	74.5	35
51219030301	51219030302	51219030303	51219030304	THREAD JOINT,PRESS DN32-1 1/4 FEMALE	76.5	35
51219030401	51219030402	51219030403	51219030404	THREAD JOINT,PRESS DN32-1 1/2 FEMALE	79.5	35
51219040301	51219040302	51219040303	51219040304	THREAD JOINT,PRESS DN40-1 1/4 FEMALE	87	42.5
51219040401	51219040402	51219040403	51219040404	THREAD JOINT,PRESS DN40-1 1/2 FEMALE	89	42.5
51219050401	51219050402	51219050403	51219050404	THREAD JOINT,PRESS DN50-1 1/2 FEMALE	99.5	48.5
51219050501	51219050502	51219050503	51219050504	THREAD JOINT,PRESS DN50-2 FEMALE	101.5	48.5
51219060601	51219060602	51219060603	51219060604	THREAD JOINT,PRESS DN60-2 1/2 FEMALE	112	58
51219140601	51219140602	51219140603	51219140604	THREAD JOINT,PRESS DN65-2 1/2 FEMALE	115	60
51219070701	51219070702	51219070703	51219070704	THREAD JOINT,PRESS DN80-3 FEMALE	126	70

Remarks: NSF Certified Pipe and Fitting in DN20-DN80

UNION FEMALE (BSP)



EPDM SS304	EPDM (NSF)	NBR	FKM	Description of Products	A	C
51250000001	51250000002	51250000003	51250000004	UNION FEMALE,PRESS DN15-1/2 FEMALE	52.5	21
51250010101	51250010102	51250010103	51250010104	UNION FEMALE,PRESS DN20-3/4 FEMALE	56	24
51250020201	51250020202	51250020203	51250020204	UNION FEMALE,PRESS DN25-1 FEMALE	64.5	28
51250030301	51250030302	51250030303	51250030304	UNION FEMALE,PRESS DN32-1 1/4 FEMALE	77	35
51250040401	51250040402	51250040403	51250040404	UNION FEMALE,PRESS DN40-1 1/2 FEMALE	87	42.5
51250050501	51250050502	51250050503	51250050504	UNION FEMALE,PRESS DN50-2 FEMALE	96	48.5

Remarks: NSF Certified Pipe and Fitting in DN20-DN80

THREAD JOINT MALE (BSP)



EPDM SS304	EPDM (NSF)	NBR	FKM	Description of Products	A	C
51217000001	51217000002	51217000003	51217000004	THREAD JOINT,PRESS DN15-1/2 MALE	56	21
51217000101	51217000102	51217000103	51217000104	THREAD JOINT,PRESS DN15-3/4 MALE	57.5	21
51217010001	51217010002	51217010003	51217010004	THREAD JOINT,PRESS DN20-1/2 MALE	58.5	24
51217010101	51217010102	51217010103	51217010104	THREAD JOINT,PRESS DN20-3/4 MALE	61	24
51217010201	51217010202	51217010203	51217010204	THREAD JOINT,PRESS DN20-1 MALE	65.5	24
51217020001	51217020002	51217020003	51217020004	THREAD JOINT,PRESS DN25-1/2 MALE	72	28
51217020101	51217020102	51217020103	51217020104	THREAD JOINT,PRESS DN25-3/4 MALE	66.5	28
51217020201	51217020202	51217020203	51217020204	THREAD JOINT,PRESS DN25-1 MALE	72	28
51217020301	51217020302	51217020303	51217020304	THREAD JOINT,PRESS DN25-1 1/4 MALE	79	28
51217030201	51217030202	51217030203	51217030204	THREAD JOINT,PRESS DN32-1 MALE	85	35
51217030301	51217030302	51217030303	51217030304	THREAD JOINT,PRESS DN32-1 1/4 MALE	96	35
51217030401	51217030402	51217030403	51217030404	THREAD JOINT,PRESS DN32-1 1/2 MALE	100	35
51217040301	51217040302	51217040303	51217040304	THREAD JOINT,PRESS DN40-1 1/4 MALE	99	42.5
51217040401	51217040402	51217040403	51217040404	THREAD JOINT,PRESS DN40-1 1/2 MALE	107	42.5
51217050401	51217050402	51217050403	51217050404	THREAD JOINT,PRESS DN50-1 1/2 MALE	99.5	48.5
51217050501	51217050502	51217050503	51217050504	THREAD JOINT,PRESS DN50-2 MALE	121.5	48.5
51217060601	51217060602	51217060603	51217060604	THREAD JOINT,PRESS DN60-2 1/2 MALE	122	58
51217140601	51217140602	51217140603	51217140604	THREAD JOINT,PRESS DN65-2 1/2 MALE	125	60
51217070701	51217070702	51217070703	51217070704	THREAD JOINT,PRESS DN80-3 MALE	134	70

Remarks: NSF Certified Pipe and Fitting in DN20-DN80

90° ELBOW MALE (BSP)



EPDM SS304	EPDM (NSF)	NBR	FKM	Description of Products	A	B	C
51215000001	51215000002	51215000003	51215000004	90° ELBOW, PRESS DN15-1/2 MALE	47.5	50	21
51215010001	51215010002	51215010003	51215010004	90° ELBOW, PRESS DN20-1/2 MALE	59	55	24
51215010101	51215010102	51215010103	51215010104	90° ELBOW, PRESS DN20-3/4 MALE	59	56.5	24
51215020101	51215020102	51215020103	51215020104	90° ELBOW, PRESS DN25-3/4 MALE	71.5	64	28
51215020201	51215020202	51215020203	51215020204	90° ELBOW, PRESS DN25-1 MALE	71.5	69.5	28
51215030201	51215030202	51215030203	51215030204	90° ELBOW, PRESS DN32-1 MALE	84	77	35
51215030301	51215030302	51215030303	51215030304	90° ELBOW, PRESS DN32-1 1/4 MALE	84	83	35
51215040301	51215040302	51215040303	51215040304	90° ELBOW, PRESS DN40-1 1/4 MALE	107	96	42.5
51215040401	51215040402	51215040403	51215040404	90° ELBOW, PRESS DN40-1 1/2 MALE	107	98	42.5
51215050401	51215050402	51215050403	51215050404	90° ELBOW, PRESS DN50-1 1/2 MALE	129.5	114	48.5
51215050501	51215050502	51215050503	51215050504	90° ELBOW, PRESS DN50-2 MALE	129.5	119	48.5

Remarks: NSF Certified Pipe and Fitting in DN20-DN80

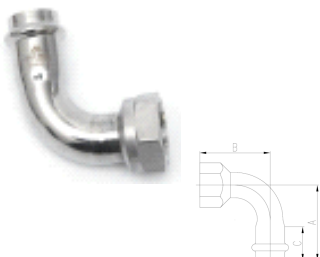
SHORT 90° ELBOW FEMALE (BSP)



EPDM SS304	EPDM (NSF)	NBR	FKM	Description of Products	A	B	C
51269000001	51269000002	51269000003	51269000004	SHORT ELBOW,PRESS DN15-1/2 FEMALE	36	31	21
51269010001	51269010002	51269010003	51269010004	SHORT ELBOW,PRESS DN20-1/2 FEMALE	39.5	33	24
51269010101	51269010102	51269010103	51269010104	SHORT ELBOW,PRESS DN20-3/4 FEMALE	41.5	34.5	24
51269020101	51269020102	51269020103	51269020104	SHORT ELBOW,PRESS DN25-3/4 FEMALE	51	37	28
51269020201	51269020202	51269020203	51269020204	SHORT ELBOW,PRESS DN25-1 FEMALE	51	40	28
51269030201	51269030202	51269030203	51269030204	SHORT ELBOW,PRESS DN32-1 FEMALE	61.5	43	35
51269030301	51269030302	51269030303	51269030304	SHORT ELBOW,PRESS DN32-1 1/4 FEMALE	61.5	49	35

Remarks: NSF Certified Pipe and Fitting in DN20-DN80

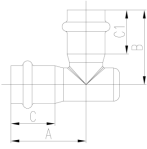
90° ELBOW FEMALE (BSP)



EPDM SS304	EPDM (NSF)	NBR	FKM	Description of Products	A	B	C
51213000001	51213000002	51213000003	51213000004	90° ELBOW, PRESS DN15-1/2 FEMALE	47.5	44	21
51213010001	51213010002	51213010003	51213010004	90° ELBOW, PRESS DN20-1/2 FEMALE	59	47	24
51213010101	51213010102	51213010103	51213010104	90° ELBOW, PRESS DN20-3/4 FEMALE	59	50.5	24
51213020101	51213020102	51213020103	51213020104	90° ELBOW, PRESS DN25-3/4 FEMALE	71.5	56.5	28
51213020201	51213020202	51213020203	51213020204	90° ELBOW, PRESS DN25-1 FEMALE	71.5	60.5	28
51213030201	51213030202	51213030203	51213030204	90° ELBOW, PRESS DN32-1 FEMALE	84	73	35
51213030301	51213030302	51213030303	51213030304	90° ELBOW, PRESS DN32-1 1/4 FEMALE	84	75	35
51213040401	51213040402	51213040403	51213040404	90° ELBOW, PRESS DN40-1 1/2 FEMALE	107	90	42.5
51213050501	51213050502	51213050503	51213050504	90° ELBOW, PRESS DN50-2 FEMALE	129.5	114	48.5

Remarks: NSF Certified Pipe and Fitting in DN20-DN80

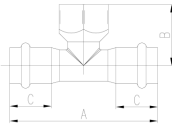
SHORT ELBOW



EPDM SS304	EPDM (NSF)	NBR	FKM	Description of Products	A	B	C	C1
51263000001	51263000002	51263000003	51263000004	SHORT ELBOW, DN15, PRESS SHORT	36	36	21	21
51263010001	51263010002	51263010003	51263010004	ELBOW, DN20-DN15, PRESS SHORT	41.5	41.5	24	24
51263010101	51263010102	51263010103	51263010104	ELBOW, DN20, PRESS SHORT	41.5	39	24	21
51263020101	51263020102	51263020103	51263020104	ELBOW, DN25-DN20, PRESS SHORT	51	51	28	28
51263020201	51263020202	51263020203	51263020204	ELBOW, DN25, PRESS SHORT	51	44	28	24
51263030201	51263030202	51263030203	51263030204	ELBOW, DN32-DN25, PRESS SHORT	61.5	61.5	35	35
51263030301	51263030302	51263030303	51263030304	ELBOW, DN32, PRESS	61.5	54	35	28

Remarks: NSF Certified Pipe and Fitting in DN20-DN80

SHORT THREAD TEE FEMALE



EPDM SS304	EPDM (NSF)	NBR	FKM	Description of Products	A	B	C
51267000001	51267000002	51267000003	51267000004	SHORT THREAD TEE,PRESS DN15-1/2 FEMALE	75	31	21
51267010001	51267010002	51267010003	51267010004	SHORT THREAD TEE,PRESS DN20-1/2 FEMALE	90	33	24
51267010101	51267010102	51267010103	51267010104	SHORT THREAD TEE,PRESS DN20-3/4 FEMALE	90	34.5	24
51267020101	51267020102	51267020103	51267020104	SHORT THREAD TEE,PRESS DN25-3/4 FEMALE	108	37	28
51267020201	51267020202	51267020203	51267020204	SHORT THREAD TEE,PRESS DN25-1 FEMALE	108	40	28
51267030201	51267030202	51267030203	51267030204	SHORT THREAD TEE,PRESS DN32-1 FEMALE	130	43	35
51267030301	51267030302	51267030303	51267030304	SHORT THREAD TEE,PRESS DN32-1 1/4 FEMALE	130	49	35

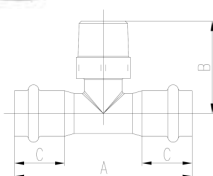
Remarks: NSF Certified Pipe and Fitting in DN20-DN80

SWING CHECK VALVE



EPDM SS304	Description of Products
12080040101	SWING CHECK VALVE, 1 1/2 - 1 1/2, FEMALE-FEMALE
12080050101	SWING CHECK VALVE, 2 - 2, FEMALE-FEMALE
* NEED TWO MALE THREAD JOINTS	
12080060101	SWING CHECK VALVE, FLANGE DN60
12080140101	SWING CHECK VALVE, FLANGE DN65
12080070101	SWING CHECK VALVE, FLANGE DN80
12080080101	SWING CHECK VALVE, FLANGE DN100
12080090101	SWING CHECK VALVE, FLANGE DN125
12080100101	SWING CHECK VALVE, FLANGE DN150
12080110101	SWING CHECK VALVE, FLANGE DN200
12080120101	SWING CHECK VALVE, FLANGE DN250
* NEED TWO FLANGE JOINTS	

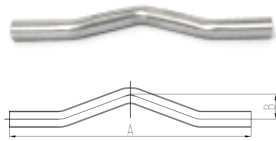
SHORT THREAD TEE MALE



EPDM SS304	EPDM (NSF)	NBR	FKM	Description of Products	A	B	C
51265000001	51265000002	51265000003	51265000004	SHORT THREAD TEE,PRESS DN15-1/2 MALE	75	37	21
51265010001	51265010002	51265010003	51265010004	SHORT THREAD TEE,PRESS DN20-1/2 MALE	90	39	24
51265010101	51265010102	51265010103	51265010104	SHORT THREAD TEE,PRESS DN20-3/4 MALE	90	40.5	24
51265020001	51265020002	51265020003	51265020004	SHORT THREAD TEE,PRESS DN25-1/2 MALE	108	42	28
51265020101	51265020102	51265020103	51265020104	SHORT THREAD TEE,PRESS DN25-3/4 MALE	108	43	28
51265020201	51265020202	51265020203	51265020204	SHORT THREAD TEE,PRESS DN25-1 MALE	108	49	28
51265030001	51265030002	51265030003	51265030004	SHORT THREAD TEE,PRESS DN32-1/2 MALE	130	45	35
51265030101	51265030102	51265030103	51265030104	SHORT THREAD TEE,PRESS DN32-3/4 MALE	130	46.5	35
51265030201	51265030202	51265030203	51265030204	SHORT THREAD TEE,PRESS DN32-1 MALE	130	52	35
51265030301	51265030302	51265030303	51265030304	SHORT THREAD TEE,PRESS DN32-1 1/4 MALE	130	57	35
51265040001	51265040002	51265040003	51265040004	SHORT THREAD TEE,PRESS DN40-1/2 MALE	164	49	42.5
51265040101	51265040102	51265040103	51265040104	SHORT THREAD TEE,PRESS DN40-3/4 MALE	164	50.5	42.5
51265040201	51265040202	51265040203	51265040204	SHORT THREAD TEE,PRESS DN40-1 MALE	164	56	42.5
51265040301	51265040302	51265040303	51265040304	SHORT THREAD TEE,PRESS DN40-1 1/4 MALE	164	61	42.5
51265040401	51265040402	51265040403	51265040404	SHORT THREAD TEE,PRESS DN40-1 1/2 MALE	164	59	42.5
51265050001	51265050002	51265050003	51265050004	SHORT THREAD TEE,PRESS DN50-1/2 MALE	187	55	48.5
51265050101	51265050102	51265050103	51265050104	SHORT THREAD TEE,PRESS DN50-3/4 MALE	187	57	48.5
51265050201	51265050202	51265050203	51265050204	SHORT THREAD TEE,PRESS DN50-1 MALE	187	62	48.5
51265050301	51265050302	51265050303	51265050304	SHORT THREAD TEE,PRESS DN50-1 1/4 MALE	187	67	48.5
51265050401	51265050402	51265050403	51265050404	SHORT THREAD TEE,PRESS DN50-1 1/2 MALE	187	65	48.5
51265050501	51265050502	51265050503	51265050504	SHORT THREAD TEE,PRESS DN50-2 MALE	187	70	48.5

Remarks: NSF Certified Pipe and Fitting in DN20-DN80

PIPE BRIDGE



EPDM SS304	Description of Products	A	B
50101000001	PIPE BRIDGE, DN15	242	23
50101010001	PIPE BRIDGE, DN20	270	31
50101020001	PIPE BRIDGE, DN25	320	38
50101030001	PIPE BRIDGE, DN32	437	44

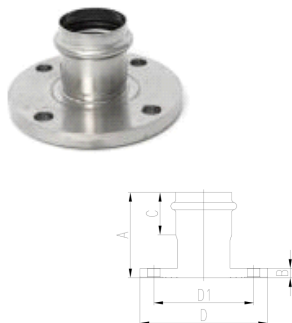
FLANGE JOINT



EPDM SS304	EPDM (NSF)	NBR	FKM	Description of Products	A	B	C	D	D1
51270030001	51270030002	51270030003	51270030004	FLANGE JOINT, DN32, PRESS	69	16	35	115	89
51270040001	51270040002	51270040003	51270040004	FLANGE JOINT, DN40, PRESS	85	18	42.5	125	98
51270050001	51270050002	51270050003	51270050004	FLANGE JOINT, DN50, PRESS	100	20	48.5	150	121
51270060001	51270060002	51270060003	51270060004	FLANGE JOINT, DN60, PRESS	117	24	58	180	140
51270140001	51270140002	51270140003	51270140004	FLANGE JOINT, DN65, PRESS	126	24	60	180	140
51270070001	51270070002	51270070003	51270070004	FLANGE JOINT, DN80, PRESS	138.5	24	70	190	152
51270080001	51270080002	51270080003	51270080004	FLANGE JOINT, DN100, PRESS	159	24	82	230	190.5
50170090003				FLANGE JOINT, DN125, CLAMP					
50170100003				FLANGE JOINT, DN150, CLAMP					
50170110003				FLANGE JOINT, DN200, CLAMP					
50170120003				FLANGE JOINT, DN250, CLAMP					

Remarks: NSF Certified Pipe and Fitting in DN20-DN80

REDUCING FLANGE JOINT



EPDM SS304	EPDM (NSF)	NBR	FKM	Description of Products	A	B	C	D	D1
51271060501	51271060502	51271060503	51271060504	REDUCING FLANGE JOINT, FLANGE DN60-DN50 PIPE, PRESS	100.5	24	48.5	180	140
51271061401	51271061402	51271061403	51271061404	REDUCING FLANGE JOINT, FLANGE DN60-DN65 PIPE, PRESS	126	24	60	180	140
51271140601	51271140602	51271140603	51271140604	REDUCING FLANGE JOINT, FLANGE DN65-DN80 PIPE, PRESS	117	24	58	180	140
51271140701	51271140702	51271140703	51271140704	REDUCING FLANGE JOINT, FLANGE DN65-DN80 PIPE, PRESS	138	24	70	180	140
51271071401	51271071402	51271071403	51271071404	REDUCING FLANGE JOINT, FLANGE DN80-DN65 PIPE, PRESS	126	24	60	190	152
51271070801	51271070802	51271070803	51271070804	REDUCING FLANGE JOINT, FLANGE DN80-DN100 PIPE, PRESS	159	24	82	190	152
51271080701	51271080702	51271080703	51271080704	REDUCING FLANGE JOINT, FLANGE DN100-DN80 PIPE, PRESS	138.5	24	70	230	190.5
50171080903				REDUCING FLANGE JOINT, FLANGE DN100-DN125 PIPE, CLAMP					
51271090801	51271090802	51271090803	51271090804	REDUCING FLANGE JOINT, FLANGE DN125-DN100 PIPE, CLAMP					
50171091003				REDUCING FLANGE JOINT, FLANGE DN125-DN150 PIPE, CLAMP					
50171100903				REDUCING FLANGE JOINT, FLANGE DN150-DN125 PIPE, CLAMP					
50171111003				REDUCING FLANGE JOINT, FLANGE DN200-DN150 PIPE, CLAMP					
50171121103				REDUCING FLANGE JOINT, FLANGE DN250-DN200 PIPE, CLAMP					

BALL VALVE FEMALE * FEMALE (BSP)



SS304	Description of Products
50475000001	BALL VALVE, 1/2 FEMALE-FEMALE
50475010001	BALL VALVE, 3/4 FEMALE-FEMALE
50475020001	BALL VALVE, 1 FEMALE-FEMALE
50475030001	BALL VALVE, 1 1/4 FEMALE-FEMALE
50475040001	BALL VALVE, 1 1/2 FEMALE-FEMALE
50475050001	BALL VALVE, 2 FEMALE-FEMALE

* Valve body seal: PTFE.

* NPT is available.

BALL VALVE MALE * MALE (BSP)



SS304	Description of Products
50475000101	BALL VALVE, 1/2 MALE-MALE
50475010101	BALL VALVE, 3/4 MALE-MALE
50475020101	BALL VALVE, 1 MALE-MALE
50475030101	BALL VALVE, 1 1/4 MALE-MALE
50475040101	BALL VALVE, 1 1/2 MALE-MALE
50475050101	BALL VALVE, 2 MALE-MALE

* Valve body seal: PTFE.

* NPT is available.

BALL VALVE MALE * FEMALE (BSP)



SS304	Description of Products
50475000201	BALL VALVE, 1/2 MALE-FEMALE
50475010201	BALL VALVE, 3/4 MALE-FEMALE
50475020201	BALL VALVE, 1 MALE-FEMALE
50475030201	BALL VALVE, 1 1/4 MALE-FEMALE
50475040201	BALL VALVE, 1 1/2 MALE-FEMALE
50475050201	BALL VALVE, 2 MALE-FEMALE

* Valve body seal: PTFE.
* NPT is available.

CLAMP VALVES (SS)



EPDM SS304	EPDM (NSF)	NBR	FKM	Description of Products
51251060101	51251060102	51251060103	51251060104	CLAMP VALVE, DN60, PRESS
51251140101	51251140102	51251140103	51251140104	CLAMP VALVE, DN65, PRESS
51251070101	51251070102	51251070103	51251070104	CLAMP VALVE, DN80, PRESS
51251080101	51251080102	51251080103	51251080104	TURBINE VALVE, DN100, PRESS
50151090101		50151090106	50151090107	TURBINE VALVE, DN125, CLAMP
50151100101		50151100106	50151100107	TURBINE VALVE, DN150, CLAMP
50151110101		50151110106	50151110107	TURBINE VALVE, DN200, CLAMP
50151120101		50151120106	50151120107	TURBINE VALVE, DN250, CLAMP

LOCKABLE



EPDM SS304	EPDM (NSF)	NBR	FKM	Description of Products
51252060101	51252060102	51252060103	51252060104	CLAMP VALVE(SS304), DN60, PRESS
51252140101	51252140102	51252140103	51252140104	CLAMP VALVE(SS304), DN65, PRESS
51252070101	51252070102	51252070103	51252070104	CLAMP VALVE(SS304), DN80, PRESS
51252080101	51252080102	51252080103	51252080104	TURBINE VALVE(SS304), DN100, PRESS
50152090103		50152090106	50152090107	TURBINE VALVE(SS304), DN125, CLAMP
50152100103		50152100106	50152100107	TURBINE VALVE(SS304), DN150, CLAMP
50152110103		50152110106	50152110107	TURBINE VALVE(SS304), DN200, CLAMP
50152120103		50152120106	50152120107	TURBINE VALVE(SS304), DN250, CLAMP

GATE VALVES



Part Number	Description of Products
12183060001	GATE VALVE(SS304), FLANGE Dn60
12183140001	GATE VALVE(SS304), FLANGE Dn65
12183070001	GATE VALVE(SS304), FLANGE Dn80
12183080001	GATE VALVE(SS304), FLANGE Dn100
12183090001	GATE VALVE(SS304), FLANGE Dn125
12183100001	GATE VALVE(SS304), FLANGE Dn150
12183110001	GATE VALVE(SS304), FLANGE Dn200
12183120001	GATE VALVE(SS304), FLANGE Dn250

* NEED TWO FLANGE JOINTS

Part Number	Description of Products
12185040001	BLOCK VALVE(SS304), 1 1/2 - 1 1/2, FEMALE-FEMALE
12185050001	BLOCK VALVE(SS304), 2 - 2, FEMALE-FEMALE

* NEED TWO MALE THREAD JOINTS

BLOCK VALVES



Part Number	Description of Products
12185060001	BLOCK VALVE(SS304), FLANGE Dn60
12185140001	BLOCK VALVE(SS304), FLANGE Dn65
12185070001	BLOCK VALVE(SS304), FLANGE Dn80
12185080001	BLOCK VALVE(SS304), FLANGE Dn100
12185090001	BLOCK VALVE(SS304), FLANGE Dn125
12185100001	BLOCK VALVE(SS304), FLANGE Dn150
12185110001	BLOCK VALVE(SS304), FLANGE Dn200
12185120001	BLOCK VALVE(SS304), FLANGE DN250

* NEED TWO FLANGE JOINTS

BALL VALVE (BRASS) FEMALE (BSP)



Part Number	Description of Products
30173000001	BALL VALVE (BRASS), 1/2-1/2 FEMALE-FEMALE
30173010001	BALL VALVE (BRASS), 3/4-3/4 FEMALE-FEMALE
30173020001	BALL VALVE (BRASS), 1-1 FEMALE-FEMALE
30173030001	BALL VALVE (BRASS), 1 1/4 - 1 1/4 FEMALE-FEMALE
30173040001	BALL VALVE (BRASS), 1 1/2-1 1/2 FEMALE-FEMALE
30173050001	BALL VALVE (BRASS), 2-2 FEMALE-FEMALE

BALL VALVE (BRASS) MALE (BSP)



Part Number	Description of Products
30173000101	BALL VALVE (BRASS), 1/2-1/2 MALE-MALE
30173010101	BALL VALVE (BRASS), 3/4-3/4 MALE-MALE

BALL VALVE (BRASS) MALE - FEMALE (BSP)



Part Number	Description of Products
30173000201	BALL VALVE (BRASS), 1/2-1/2 MALE-FEMALE
30173010201	BALL VALVE (BRASS), 3/4-3/4 MALE-FEMALE

THREADED PIPE ADAPTERS (BSP)



SS304	Description of Products
50131000001	ADAPTOR, 1/2-1/2, MALE-MALE
50131010001	ADAPTOR, 3/4-3/4, MALE-MALE
50131020001	ADAPTOR, 1-1, MALE-MALE
50131030001	ADAPTOR, 1 1/4-1 1/4, MALE-MALE
50131040001	ADAPTOR, 1 1/2-1 1/2, MALE-MALE
50131050001	ADAPTOR, 2-2, MALE-MALE
50131000002	ADAPTOR, 1/2-1/4, MALE-MALE
50131010002	ADAPTOR, 3/4-1/2, MALE-MALE
50131020002	ADAPTOR, 1-3/4, MALE-MALE
50131010003	ADAPTOR, 3/4-1, MALE-FEMALE
50131020003	ADAPTOR, 1-1/2, MALE-FEMALE

FLEXIBLE METAL HOSE



EPDM SS304	EPDM (NSF)	NBR	FKM	Description of Products
51255000001	51255000002	51255000003	51255000004	FLEXIBLE METAL HOSE, DN15*300mm, PRESS
51255010001	51255010002	51255010003	51255010004	FLEXIBLE METAL HOSE, DN20*300mm, PRESS
51255020001	51255020002	51255020003	51255020004	FLEXIBLE METAL HOSE, DN25*300mm, PRESS
51255030001	51255030002	51255030003	51255030004	FLEXIBLE METAL HOSE, DN32*300mm, PRESS
51255040001	51255040002	51255040003	51255040004	FLEXIBLE METAL HOSE, DN40*300mm, PRESS
51255050001	51255050002	51255050003	51255050004	FLEXIBLE METAL HOSE, DN50*300mm, PRESS
51255060001	51255060002	51255060003	51255060004	FLEXIBLE METAL HOSE, DN60*500mm, PRESS
51255140001	51255140002	51255140003	51255140004	FLEXIBLE METAL HOSE, DN65*500mm, PRESS
51255070001	51255070002	51255070003	51255070004	FLEXIBLE METAL HOSE, DN80*500mm, PRESS
51255080001	51255080002	51255080003	51255080004	FLEXIBLE METAL HOSE, DN100*500mm, PRESS
50155090003				FLEXIBLE METAL HOSE, DN125*500mm, CLAMP
50155100003				FLEXIBLE METAL HOSE, DN150*500mm, CLAMP
50155110003				FLEXIBLE METAL HOSE, DN200*500mm, CLAMP
50155120003				FLEXIBLE METAL HOSE, DN250*500mm, CLAMP

THREADED FLANGE FEMALE



SS304	Description of Products
30170040401	Flange, DN40-1 1/2 Female
30170050501	Flange, DN50-2 Female
30170060201	Flange, DN63-1 Female
30170060401	Flange, DN63-1 1/2 Female
30170060501	Flange, DN63-2 Female
30170070201	Flange, DN80-1 Female
30170070401	Flange, DN80-1 1/2 Female
30170070501	Flange, DN80-2 Female
30170070601	Flange, DN80-2 1/2 Female
30170080401	Flange, DN100-1 1/2 Female
30170080501	Flange, DN100-2 Female
30170080601	Flange, DN100-2 1/2 Female
30170090401	Flange, DN125-1 1/2 Female
30170090501	Flange, DN125-2 Female
30170090601	Flange, DN125-2 1/2 Female
30170090701	Flange, DN125-3 Female
30170100401	Flange, DN150-1 1/2 Female
30170100501	Flange, DN150-2 Female
30170100601	Flange, DN150-2 1/2 Female
30170100701	Flange, DN150-3 Female

PIPE CLIP



Part Number SS304	Description of Products
50122000101	PIPE CLIP U, DN15
50122010101	PIPE CLIP U, DN20
50122020101	PIPE CLIP U, DN25
50122030101	PIPE CLIP U, DN32
50122040101	PIPE CLIP U, DN40
50122050101	PIPE CLIP U, DN50
50122060101	PIPE CLIP U, DN60
50122140101	PIPE CLIP U, DN65
50122070101	PIPE CLIP U, DN80
50122080101	PIPE CLIP U, DN100
50122090101	PIPE CLIP U, DN125
50122100101	PIPE CLIP U, DN150
50122110101	PIPE CLIP U, DN200
50122120101	PIPE CLIP U, DN250

SEALS







EPDM	EPDM (NSF)	NBR	FKM	Description of Products
12160000303	12160000304	12160000202	12160000402	SEAL DN15
12160010305	12160010306	12160010203	12160010403	SEAL DN20
12160020303	12160020304	12160020202	12160020402	SEAL DN25
12160030303	12160030304	12160030202	12160030402	SEAL DN32
12160040303	12160040304	12160040202	12160040402	SEAL DN40
12160050303	12160050304	12160050202	12160050402	SEAL DN50
12160060303	12160060304	12160060202	12160060402	SEAL DN60
12160140301	12160140302	12160140201	12160140401	SEAL DN65
12160070303	12160070304	12160070202	12160070402	SEAL DN80
12160080303	12160080304	12160080203	12160080402	SEAL DN100
12160090301	not available	12160090201	12160090401	SEAL DN125
12160100301	not available	12160100201	12160100401	SEAL DN150
12160110301	not available	12160110201	12160110401	SEAL DN200
12160120301	not available	12160120201	12160120401	SEAL DN250

Technical Specifications



- Max. working pressure:
DN15-150, 16bar/ 232psi;
DN200-250, 13bar/ 188psi.
- Max. vacuum: 1mbar/ 0.03 in. Hg absolute.
- Working temperature range & fluid medium table:

Sealing code	Description	Color	Working Temperature	Main applicable medium
EPDM *	Ethylene Propylene Diene Monomer		-20°C to 120°C -4°F to 248°F	Potable water, hydronic heating, low pressure steam, fire water system.
FKM	Fluoroelastomer		-20°C to 200°C -4°F to 392°F	High temp. steam & gas, solar, heating, compressed air
NBR	Nitrile Butadiene Rubber		-20°C to 100°C -4°F to 212°F	Gas, fuel, compressed air
HNBR **	Hydrogeated Nitrile Butadiene Rubber		-40°C to 150°C -40°F to 302°F	Gas, fuel/ oil high temp. or heating systems, HVAC

* Optional NSF certified sealing for DN 15 to 100.

** Confirm with your sales before order.

Main Applications

Below are typical industrial and civil applications, please consult AQUApipe for selection of stainless steel grade and sealing type:

Compressed air, vacuum, nitrogen & other inert gases, saturated steam, fuel & oil, sea water, drinking water, gas supply, heating water, heating pump, cooling water, solar water connections, fire water, etc.



Quick & Easy Installation Press Tools



Part Number	Description of Products
51146000201	DEMO KIT



Part Number	Description of Products
50135000201	CUTTER TOOL FOR DN15-DN50
50135000202	CUTTER TOOL BLADE



Part Number	Description of Products
50135000101	CUTTER MACHINE 100F1 FOR DN15-DN100 PIPE
50135000103	100F1 SAW FOR DN15-DN100 PIPE



Part Number	Description of Products
50135000102	CUTTER MACHINE 220F1 FOR DN15-DN250 PIPE
50135000104	220F1 SAW FOR DN15-DN250 PIPE



Part Number	Description of Products
50135000301	ID DEBURR TOOL



Part Number	Description of Products
50135000401	OD DEBURR FILE



Part Number	Description of Products
30144000201	PIPE LUGGING MACHINE



Part Number	Description of Products
51144000101	JAWS SET INCLUDE 6JAWS(DN15,DN20,DN25, DN32,DN40,DN50)+1SCISSOR(FOR DN40,DN50)



Part Number	Description of Products
12144000501	PRESS JAW, DN15
12144000502	PRESS JAW, DN20
12144000503	PRESS JAW, DN25
12144000504	PRESS JAW, DN32
12144000505	PRESS JAW, DN40
12144000506	PRESS JAW, DN50
12144000507	JAW SCISSOR FOR DN40 AND DN50



Part Number	Description of Products
51144000102	PRESS GUN SET INCLUDE JAWS SET (6JAWS+1SCISSOR)+1GUN



Part Number	Description of Products
AE15 2844 00	PORTABLE PRESS GUN FOR DN20-DN50 (SAME GUN FOR LUGGING)



Part Number	Description of Products
12144000104	PORTABLE PRESS GUN (GEN2) STROKE 100MM, WITHOUT JAW SCISSOR

Part Number	Description of Products
51144000110	FULL SET (PRESS JAWS SET DN60-DN100 + PRESS SCISSOR + HYDRAULIC CYLINDER + HYDRAULIC CABLE PUMP+OIL HOSE6M)





Part Number	Description of Products
12144000410	JAWS SCISSOR (DN15-DN50 GEN2)
12144000508	PRESS JAW, DN15 (GEN2)
12144000509	PRESS JAW, DN20 (GEN2)
12144000510	PRESS JAW, DN25 (GEN2)
12144000511	PRESS JAW, DN32 (GEN2)
12144000512	PRESS JAW, DN40 (GEN2)
12144000513	PRESS JAW, DN50 (GEN2)



Part Number	Description of Products
51144000103	JAWS SET INCLUDE 6JAWS(DN15, DN20, DN25, DN32, DN40, DN50) (GEN2)



Part Number	Description of Products
50144000107	PORTABLE PRESS GUN + JAW CLAMPER (DN15-DN50 GEN2)



Part Number	Description of Products
51144000106	PRESS JAWS YANG SET INCLUDE 4JAWS + 1CYLINDER YANG(DN60, DN65, DN80, DN100)



Part Number	Description of Products
51144000115	FULL SET (PRESS JAWS YANG SET DN60-DN100+ HYDRAULIC CYLINDER YANG+ HYDRAULIC CABLE PUMP+OIL HOSE6M)



Part Number	Description of Products
12144000518	PRESS SCISSOR DN60-DN100



Part Number	Description of Products
51144000108	PRESS JAWS SET INCLUDE 4JAWS (DN60, DN65, DN80, DN100)+ CYLINDER



Part Number	Description of Products
51144000104	PRESS GUN SET GEN2, INCLUDE 6JAWS+1SCISSOR+1MACHINE



Part Number	Description of Products
12144000519	PRESS JAW YANG, DN60
12144000520	PRESS JAW YANG, DN65
12144000521	PRESS JAW YANG, DN80
12144000522	PRESS JAW YANG, DN100



Part Number	Description of Products
12144000523	HYDRAULIC CYLINDER YANG, MALE 3/8" FOR DN60-DN100,



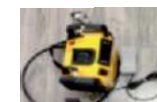
Part Number	Description of Products
12144000110	HYDRAULIC CABLE PUMP + OIL HOSE6M



Part Number	Description of Products
51144000116	FULL SET (PRESS JAWS YANG SET DN60-DN100+ HYDRAULIC CYLINDER YANG + CHARGABLE PUMP+ OIL HOSE1.5M)



Part Number	Description of Products
51144000108	HYDRAULIC CYLINDER, MALE 3/8" FOR DN60-DN100

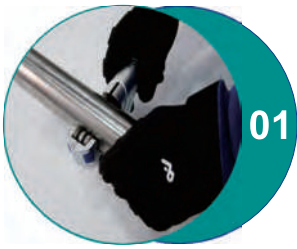


Part Number	Description of Products
12144000111	CHARGABLE PUMP+OIL HOSE1.5M



Part Number	Description of Products
51144000111	FULL SET (PRESS JAWS SET DN60-DN100+ PRESS SCISSOR + HYDRAULIC CYLINDER + CHARGABLE PUMP+OIL HOSE1.5M)

DN15 - 100 Press Connection



Use hand cutter tool to cut pipe.



Deburr and chamfer the pipe end.



To make sure build-in seal well.



Use caliper to check and finish.

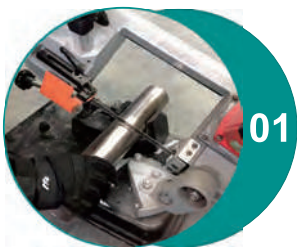


Pressing by press tools.

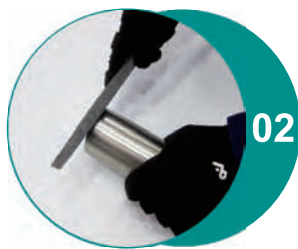


Mark the pipe with a marker pen.

DN125 - 250 Clamp Connection



Use cutting machine to cut pipe.



Deburr and chamfer the pipe end.



Use lugging machine to lug pipe.



Tighten the clamp screws, make the clamp closed fully.



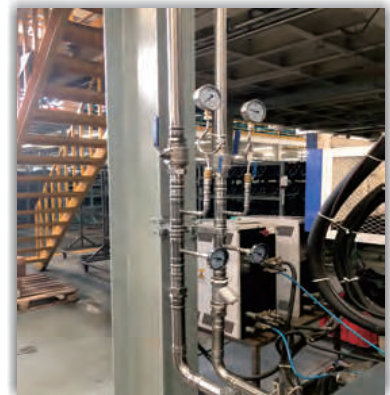
Position the clamp over the sealing element, make sure lugs are in the groove.



Insert pipes to the seal 2-3cm for both side.

Applications

Industrial Installations





One-stop Service

AQUApipe is providing experience of **“One-stop Service”** to the worldwide customers, from the design of the pipe system to after service, one stop solution.



Warranty and Certifications

10 Year Warranty:



AQUApipe warrants its products to be free of defects in material for a period of ten years from the date of product purchase.

AQUApipe does not warrant the design, assembly or installation of the system, but only the components within AQUApipe’s LOGO. AQUApipe is not responsible for improper assembly, installation, or for any modifications of the product.

The warranty is void upon:

- (a) Failure to follow assembly or installation guidelines;
- (b) Alteration, misuse or abuse of, or damage to the products;
- (c) Operation beyond the design range, excessive pressure, stress, or mishandling in any way;
- (d) Use other than for the intended purpose or in a manner other than specified by AIRpipe.

* AQUApipe is a product brand in AIRpipe Group.



Certifications and Compliances:

ISO 9001 version 2015
 ISO 14001 version 2004
 ASME, UL, TUV, CRN, CE, EN and TS

 **U.S. FOOD & DRUG ADMINISTRATION**
 FDA CFR 21, GRAS, Food and Drugs Regulation in US





We provide superior performing compressed air & fluid systems with engineered longevity to reduce operating costs and improve productivity.

AIRpipe USA

Tel: 602.362.PIPE (7473)
6855 S Kyrene Rd, Suite #101, Tempe, AZ 85283
Email: customerservice@airpipeusa.com
Web: www.airpipeusa.com

AIRpipe EUROPE

Tel: +33 (0)2 40 05 10 20
4 impasse Augustin Fresnel, 44800 Saint-Herblain, France
Email: contact@airpipe-Europe.com
Web: www.airpipe-europe.com

AIRpipe KOREA

Tel: 82-01031743896
No.201,124-24, Dorim-ro, Yeongdeungpo-gu, Seoul, Republic of Korea 07416
Email: ethan@airpipetech.com
Web: <http://www.airpipetech.com/kr/>

AIRpipe CAMBODIA

Roka Kaoh Commune, Kong Pisei District, Kampong Speu Province. Cambodia
Web: www.airpipe.com.cn

AIRpipe TAIWAN

Tel: +886-3-5889930 Fax: +886-3-5889970
No. 283-41, Baozhong Rd., Xinpu Township, Hsinchu Country 305, Taiwan (R.O.C.)
Email: jeff_lung@airpipetech.com
Web: www.airpipetech.com

AIRpipe VIETNAM

Tel: 02873001984
3/18 Le Thi Rieng, Quarter 1, An Thoi Ward, District 12, HCMC, Vietnam
Email: chenjs@airpipetech.com
Web: <http://www.airpipetech.com/vie/>

AIRpipe CHINA

Tel: +86 574 5587 6761
Fax: +86 574 8788 5151
No.18 MoGanShan Road, BeiLun District, NingBo, China 315800
Email: info@airpipetech.com
Web: <http://www.airpipetech.com/en/>



Follow us on :



* AQUAPipe is a product brand in AIRpipe Group.

Publication AIRpipe - #01/2019/EN/AP
AIRpipe reserves the rights to modify this documents without prior notice.

Shreyansh Enterprises :9899611990



www.airpipe.in

Instamod Air Pipe Pvt. Ltd.
709, Shahpuri Tower, C-58, Janakpuri,
New Delhi - 110058. Tel : 011- 49535588
Email : sales@airpipe.in, santosh.kumar@airpipe.in

Branch Office :

SF. No. 106/2L1,
Thannam Nagar, Karayapalayam,
Sulur Coimbatore - 641062
E-mail : south1@airpipe.in